

LEAD PREVENTION

- Cover chipping lead-based paint with a lead-free paint.
- Run cold water for one minute before using hot water to cook.
- Wipe windowsills free of water and dust.
- Remove shoes before entering the home and mop often.
- Cover bare soil with mulch or grass.
- Have your home inspected for lead before moving in.

**VISIT OUR PAGE
TO FIND MORE
RESOURCES!**



Your Child's Lead Action Plan

Circle
the next step
in the child's lead action
plan below.

Home Prevention

Finger Prick

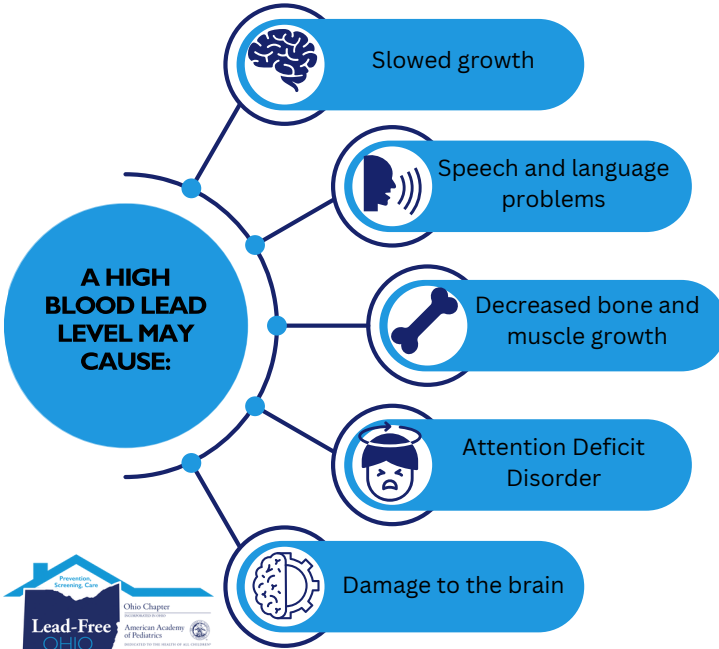
Blood Draw

Early Intervention Referral

Home Lead Detection

Contact the **Ohio Healthy Homes Network**
at **1-877-532-3723** to find the source of
lead in your home.

Introduction to Lead



What is lead? 

Lead is an environmental toxin that is harmful to children. Most exposure happens when a child puts things into their mouths.

 Where is lead?

Lead can be found in paint, makeup, toys, spices, water service lines, soil, traditional medicine techniques, and ceramics.

What should I do to protect my child? 

Ask your pediatrician for a lead test and and share your concerns. They will connect you with other resources to keep your child safe.